

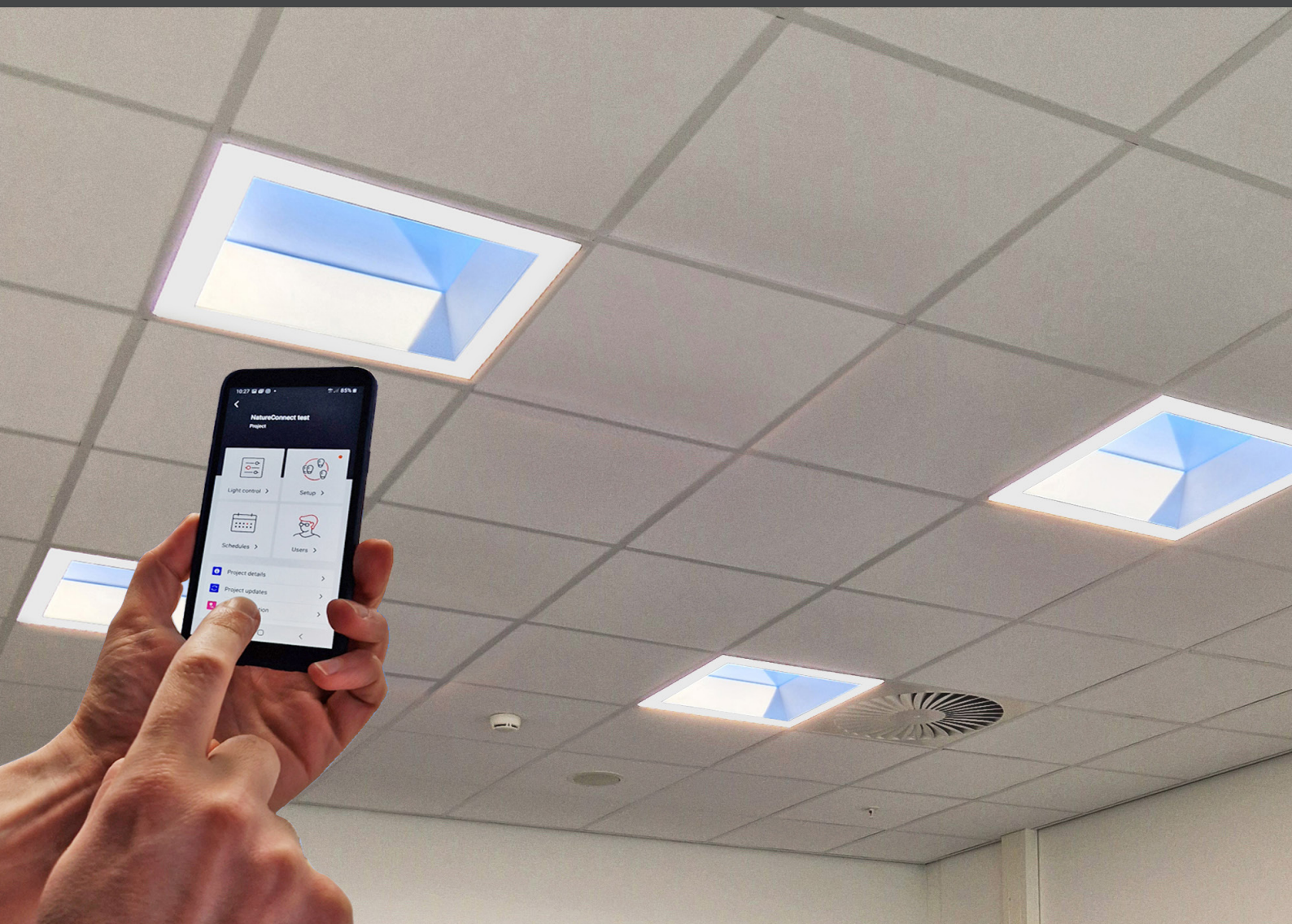
NatureConnect

by Signify

Commissioning guide

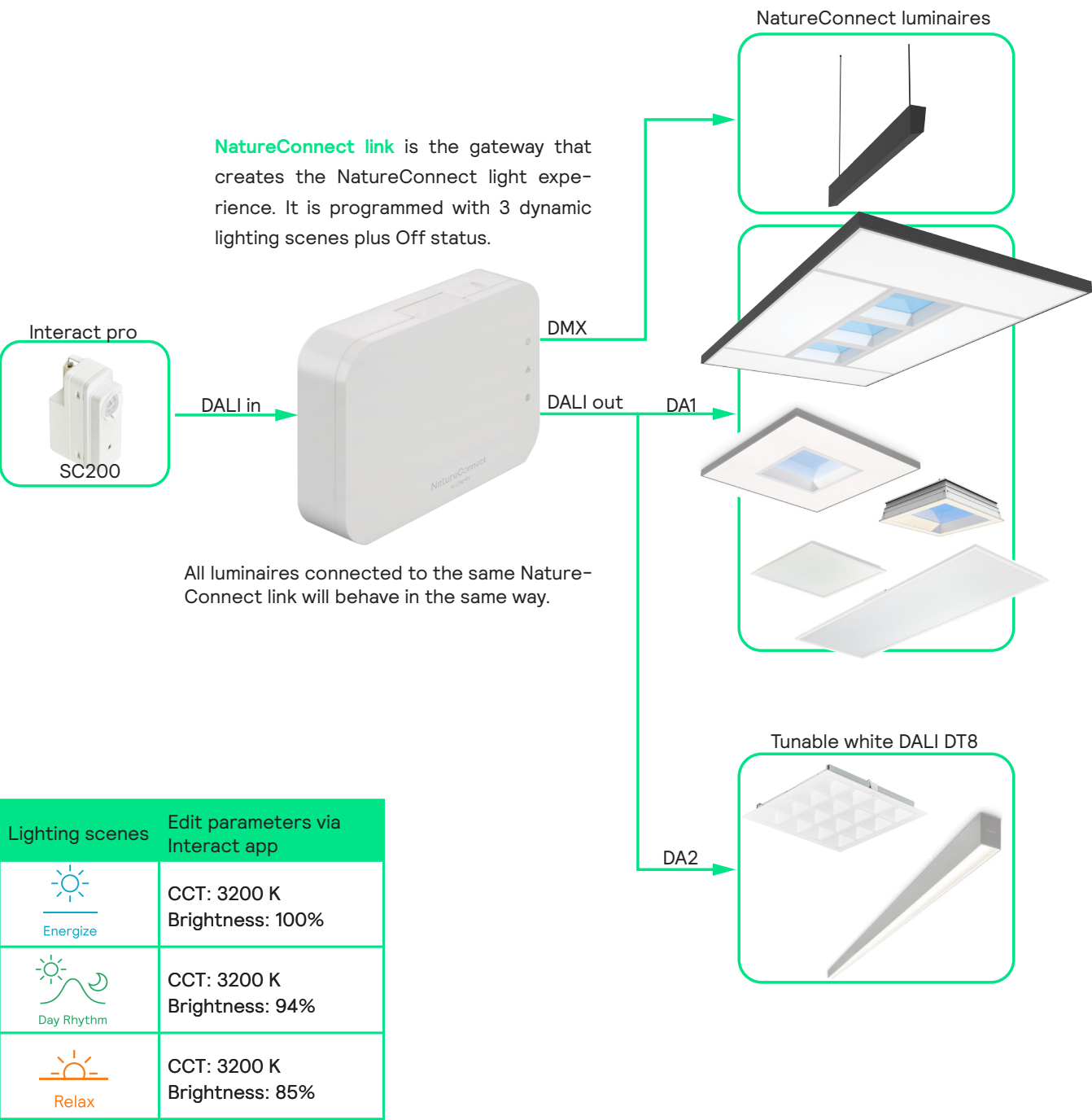
NatureConnect link & Interact PRO

December, 2024



Introduction

The NatureConnect system is based on biophilic design principles, which uses elements of nature and natural analogues in indoor spaces to make people feel happy and healthy. Unlike traditional lighting which focuses on visual benefits, NatureConnect additionally brings the biological and emotional benefits of lighting. It reconnects us with the constant cycles and variations of nature for comfortable, engaging and attractive indoor environments.



Compatible with firmware 1.4.6 configured from production date 24W48 ! Please check on the box label.

The best NatureConnect experience is achieved combining NatureConnect link with switch and presence sensors.

NatureConnect switch



Interact switch with NatureConnect icons (910505103545)

- ▶ Wireless, battery free
- ▶ Scene and Off buttons with icons and text for ease of use
- ▶ High quality engraving for long durability

Presence sensors

help to reduce the power consumption. They can be programmed in a way that when no occupancy is detected, inside the room, they send the signal to the NatureConnect link to turn off the luminaires. When presence is detected it goes automatically to “Day Rhythm”.

NatureConnect scenes

Following the natural day rhythm, the luminaires, connected to NatureConnect link, can automatically adjust to the time of the day in three different scenes: Day Rhythm, Energize and Relax.



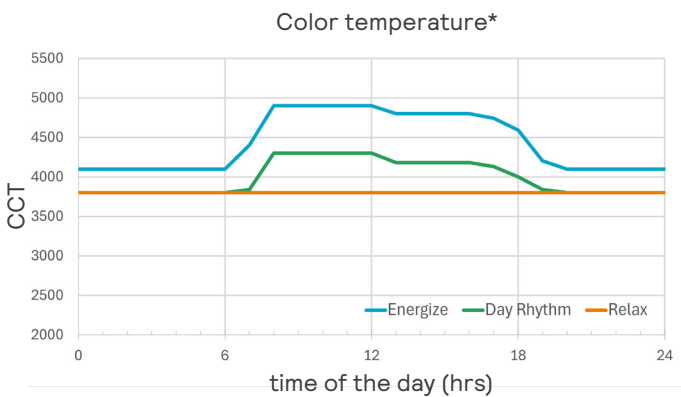
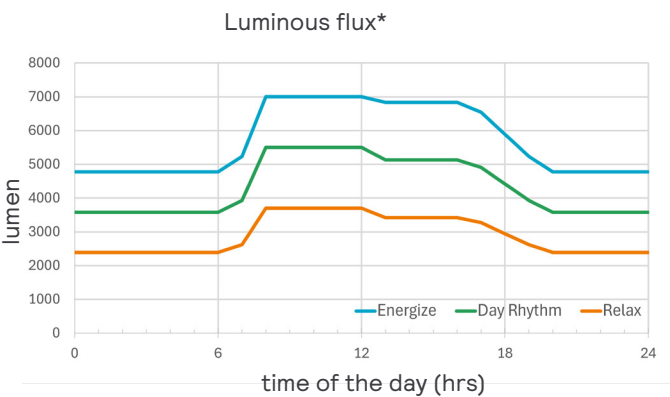
Light levels and color temperature are set to give the best daylight experience.



A high brightness cool scene that gives a boost of energy. Perfect for interaction and active collaboration.



Scene that reproduces a relaxing atmosphere, with reduced blue light emissions.



* These values referes to NatureConnect skylight W60L60/W62L62

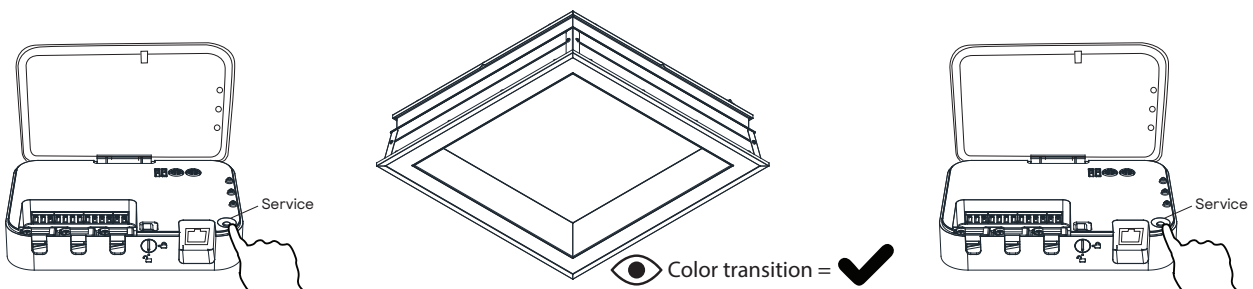
Commissioning with interact PRO as Lighting Control System

You will need a device that supports Interact commissioning app. (e.g. smartphone or a tablet) with Bluetooth technology.

For more info check:

<https://sme.interact-lighting.com/web/help/prf-pra/2.3/install/commissioning.html>

I Test the connection with the luminaires by pressing the service button



① Press the "service" button to start the test

② Check luminaires

③ Press the "service" button to finish the test

2 Download the **interact** office app and create an account

Download the
Interact Pro app



interact

Log in to
Interact Pro

Email address

Password

[Forgot password](#)

Get started

By proceeding you agree with the [Terms of usage](#)

Are you an installer company and not yet registered?

Request access

Create a project

The first screenshot shows the 'Projects' screen with a message 'No projects have been created yet' and a red 'Create project' button at the bottom. The second screenshot shows the 'Create new project' screen with a progress bar indicating two steps: 'Project information' and 'Installation details'. The 'Project information' step is active, showing fields for 'Project name' (NatureConnect demo), 'Project type' (Office), and 'Timezone' (UTC+01:00 Europe/Amsterdam). A red 'Next' button is at the bottom. The third screenshot shows the 'Installation details' step with fields for 'Address' (High Tech Campus Z), 'Zip' (5656 AE), 'City' (Eindhoven), 'State/Province' (Noord-Brabant), and 'Country' (Netherlands (the)). A red 'Create' button is at the bottom.

Fill in the fields and open the new project just created.

Create a Light Network

The first screenshot shows the 'NatureConnect demo' project screen with a 'Setup' button. The second screenshot shows the 'Setup' screen with a 'Create network' button. The third screenshot shows the 'Add light network' screen with a text input field for the network name. The fourth screenshot shows the 'Commissioning method' screen with a 'Next' button.

Add a group

×

Grouping Instructions

Groups and zones

Lights are organized in groups and zones (sub-groups). One group contains maximum 40 lights.

Next

×

Grouping Instructions

Lights in a group

Lights in a group respond to individual settings and thus can have different light levels when in a scene.

BackNext

×

Grouping Instructions

Group controls

A group can be controlled with switches, occupancy sensors or schedules (via gateway). One group contains maximum 5 controls.

BackNext

×

Grouping Instructions

Lights in a zone

Lights in a zone (sub-group) respond as a whole; when added to a scene, all lights show equal light levels

BackNext

×

Grouping Instructions

Zone daylight regulation

When a multi-sensor is added to a zone, the daylight sensor in it adapts the light level of the zone to the ingress of daylight. You can have one multi-sensor per zone (next to the 5 controls per group).

BackGot it

<

Office building

Network

GATEWAY

0 LIGHTS

0 CONTRO...

No gateway

0 Unassigned

0 Unassigned

Groups

No groups

Create group

×

Create group

Give the group a name

Meeting room

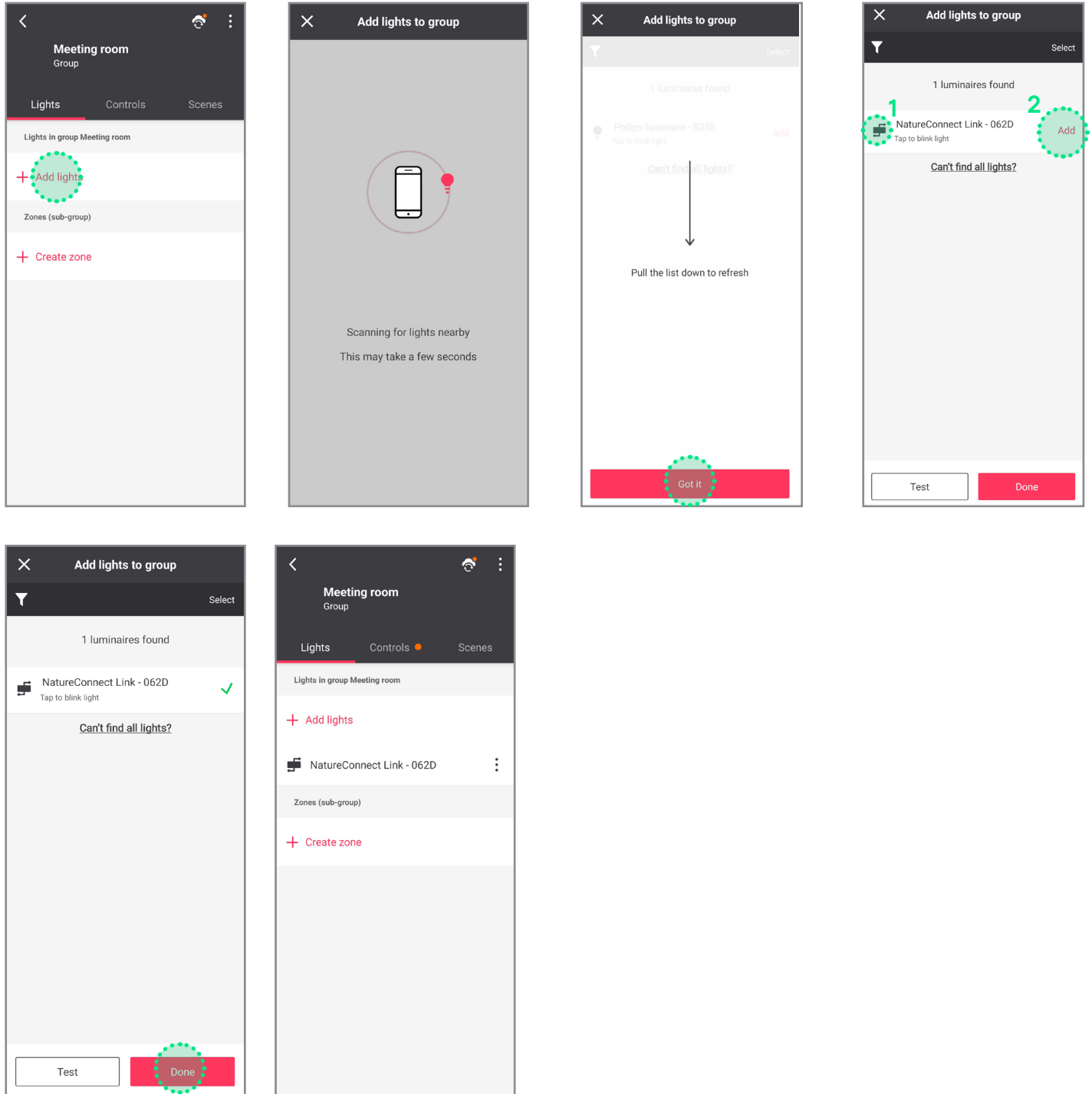
Done

4 Find and assign one or more NatureConnect link that belong to the same group.

Stand close (2 m ca.) to the sensor connected to the NatureConnect link. (Bluetooth must be active on your device.)

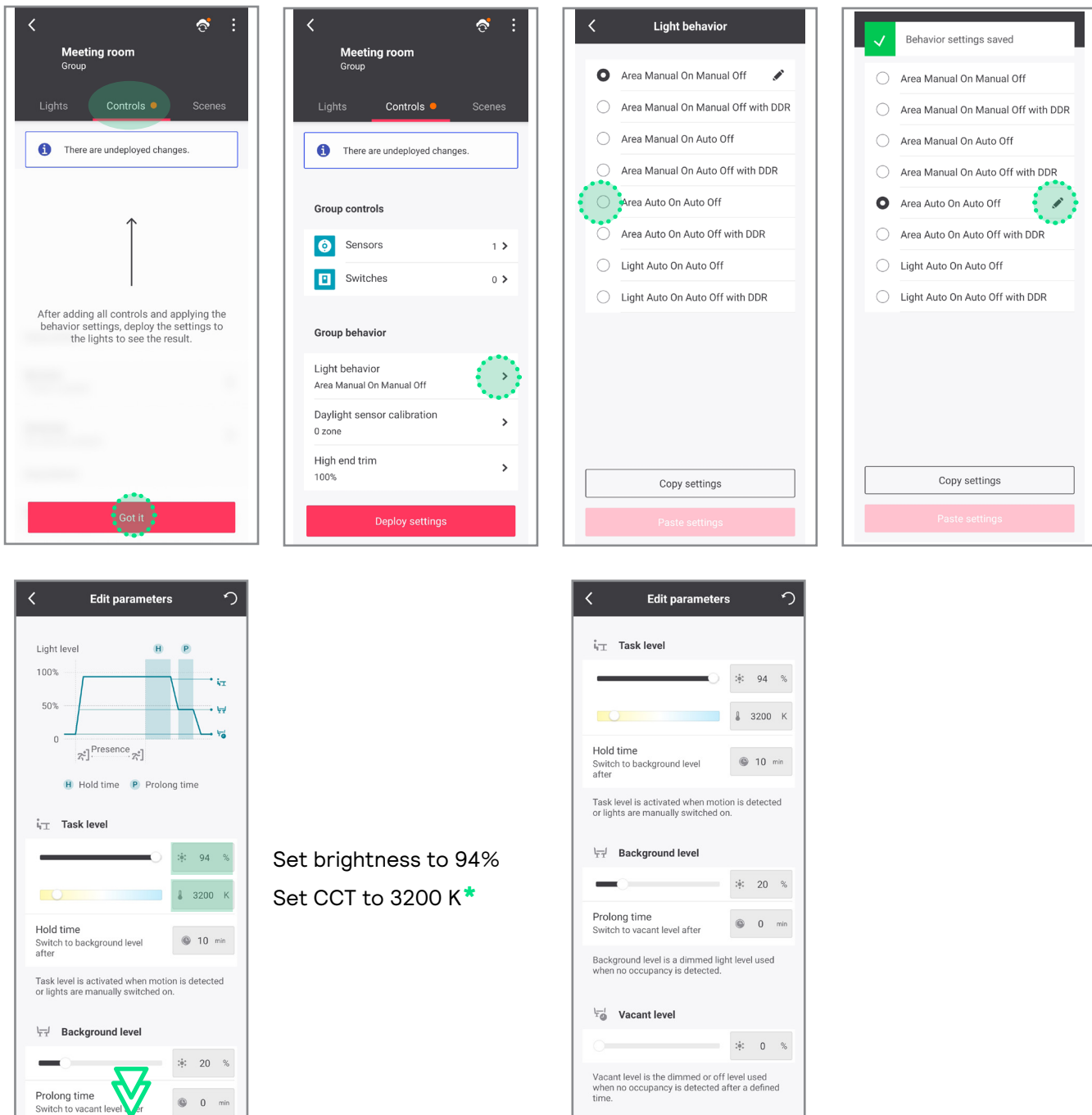
Tab **Lights**: click on **Add lights**

It will be found as e.g.: **Philips luminaire - ****** or **NatureConnect link - ******.



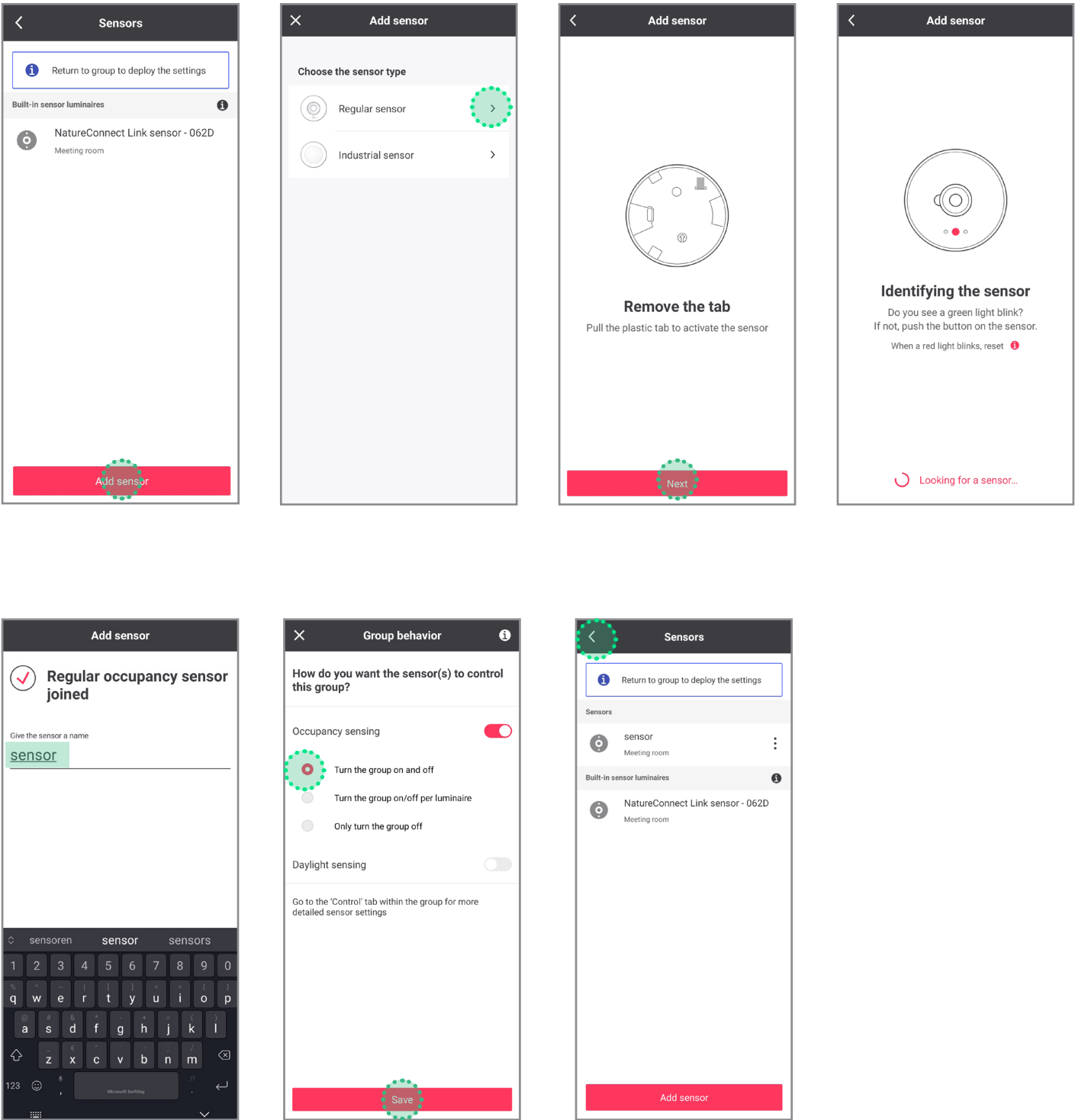
1 Click the left icon to blink the connected luminaire(s) to identify the NatureConnect link.

2 Click the add button for each NatureConnect link you would like to add to the same group.

Tab **Controls**

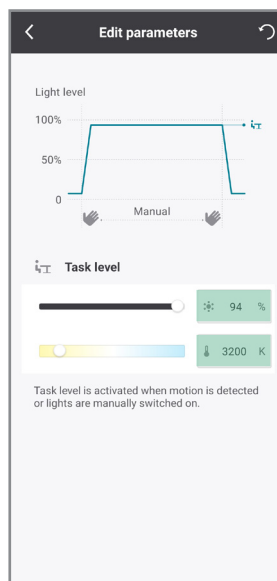
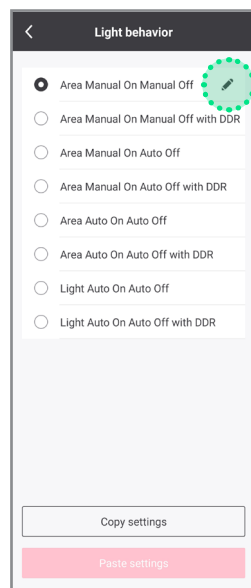
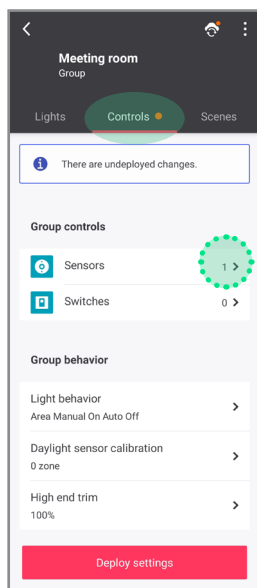
* 3200 K is the parameter edited for the configuration and not the real CCT of the luminaire.

Optional: how to add battery power motion sensor



6

Configure the system without motion sensors

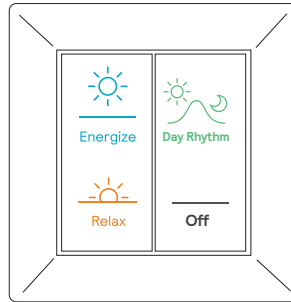


Set brightness to 94%

Set CCT to 3200 K*

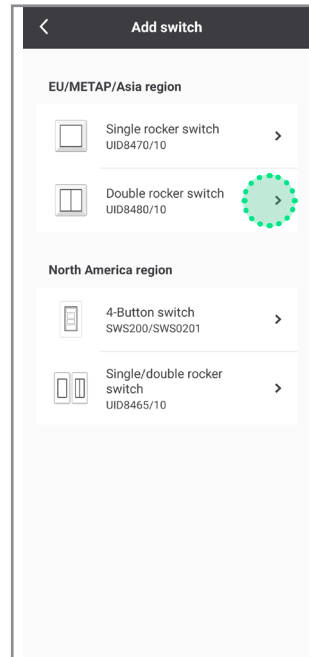
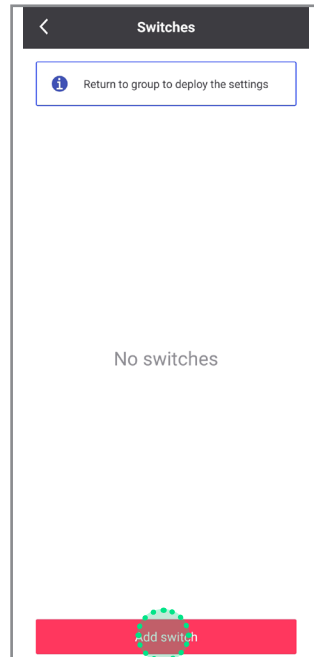
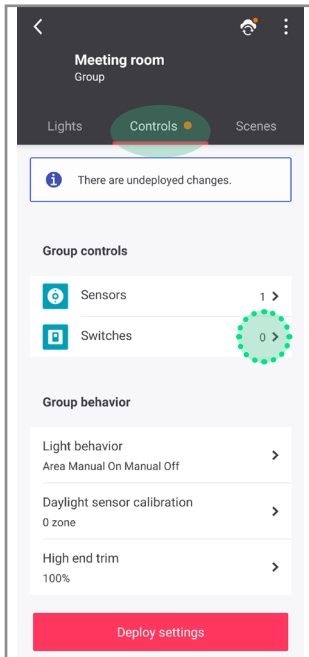
* 3200 K is the parameter edited for the configuration and not the real CCT of the luminaire.

! If you are not using any user interface, skip to step 8.

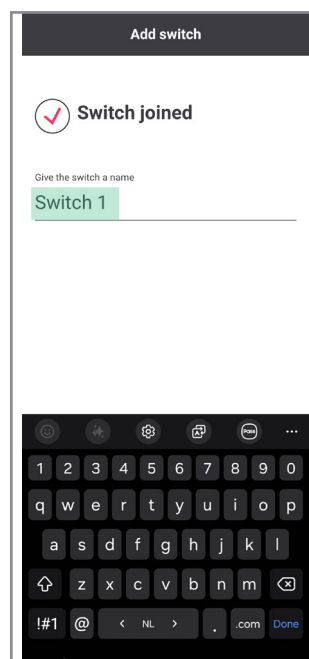
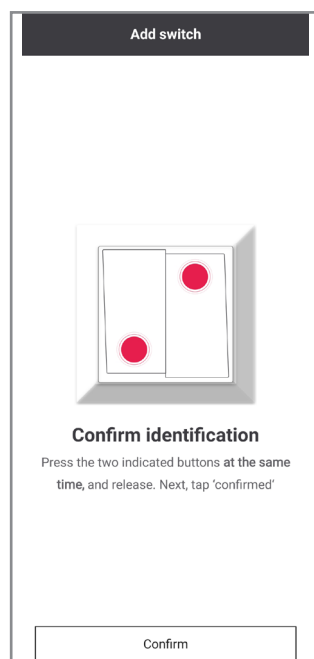
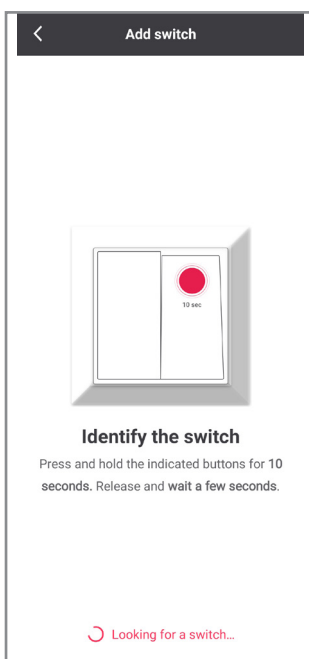


When more than one switch is used, all switches will behave in the same way.

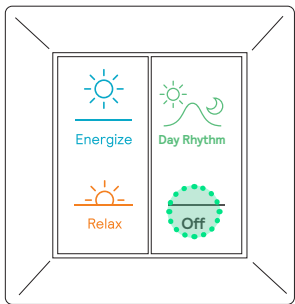
Tab **Controls**: click on **Switches**




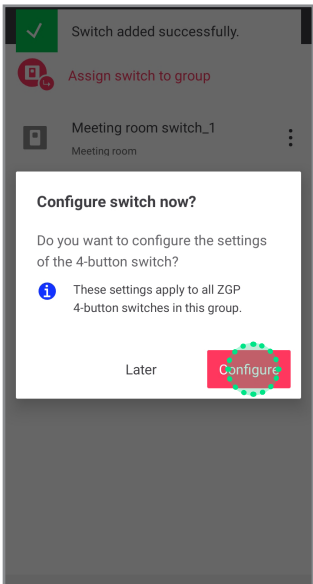
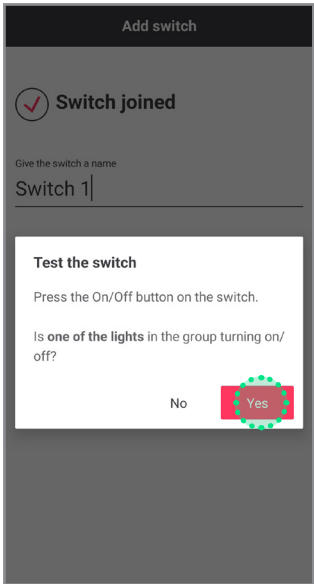
Identify the switch following the instructions



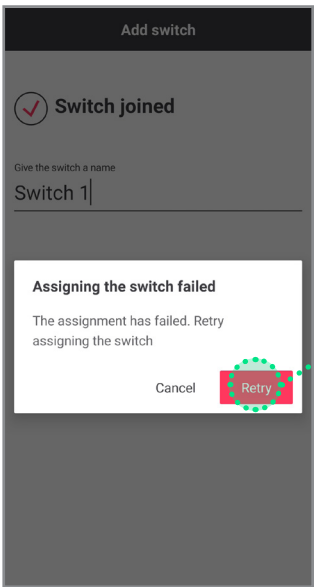
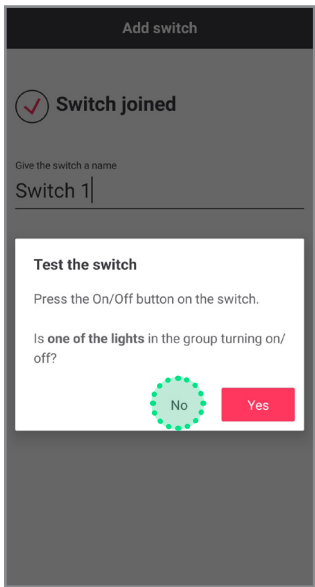
Test if the switch is added by clicking ON/OFF button



Lights turned off? If yes 



In case luminaires in the group do not turn off, follow below steps

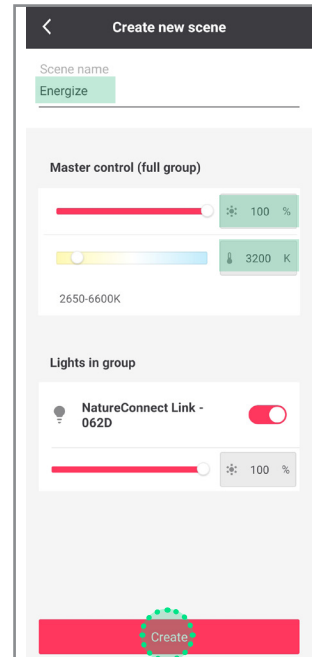
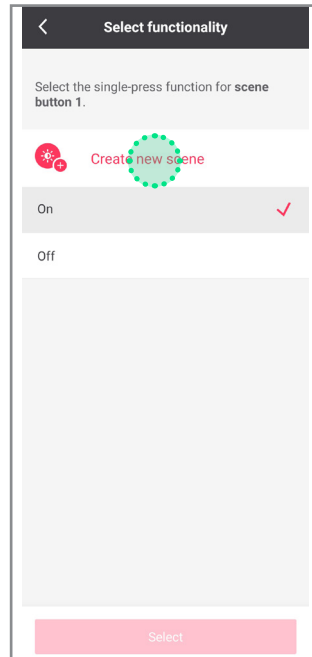
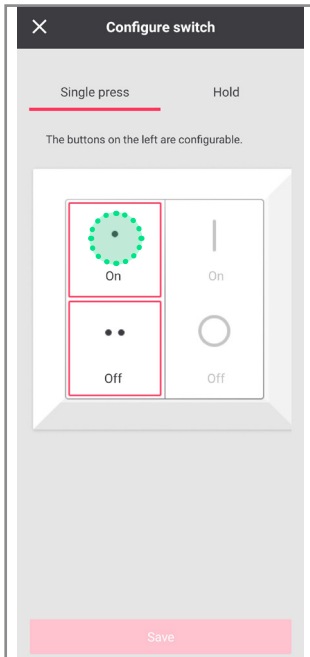


Retry will restart the add switch flow from the beginning.

8

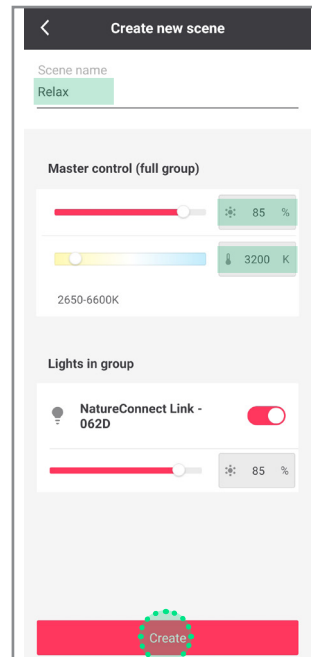
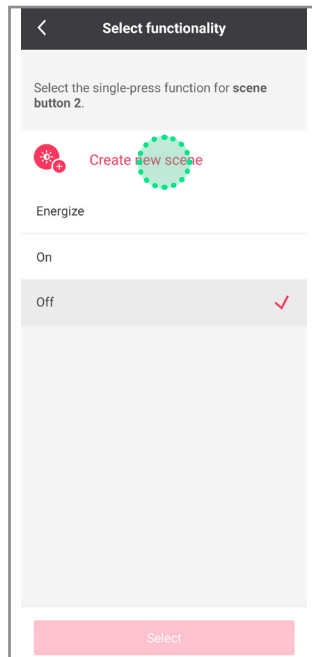
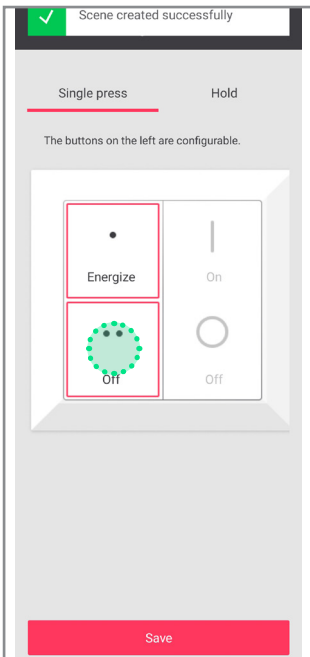
Configure the four button switch

Configure the TOP LEFT button as the ENERGIZE scene

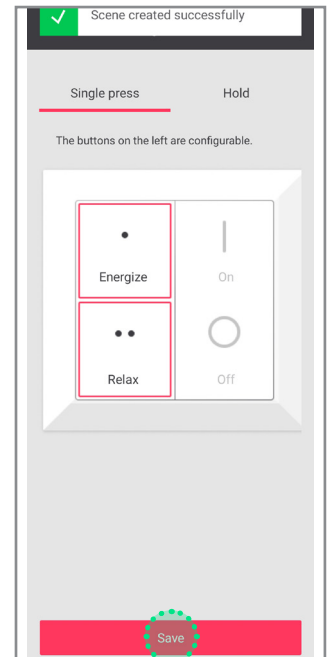


Set brightness to 100%
Set CCT to 3200 K

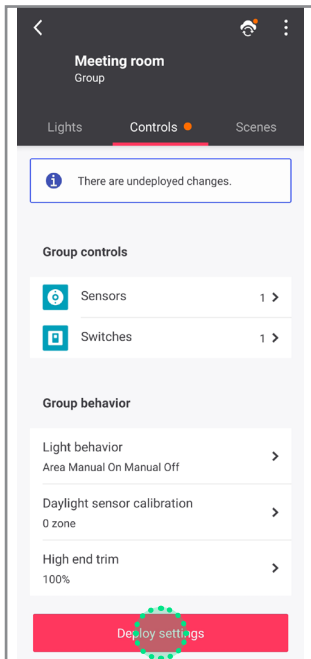
Configure the BOTTOM LEFT button as the RELAX scene



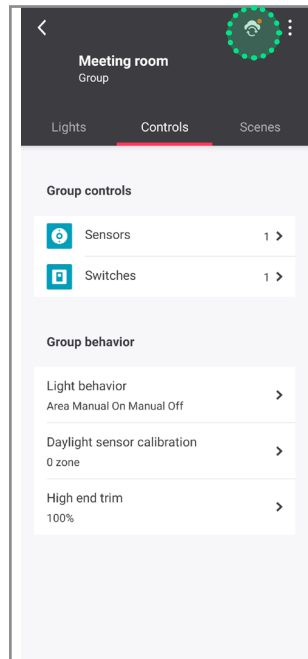
Set brightness to 85%
Set CCT to 3200 K



Deploy



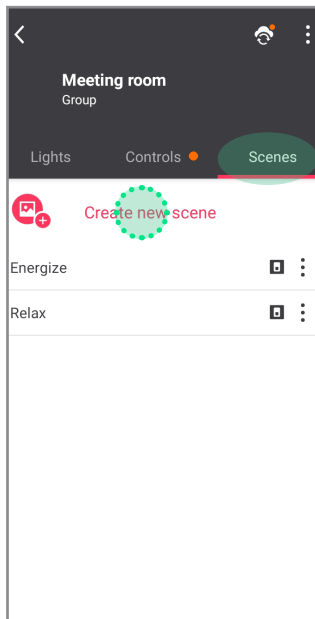
Sync



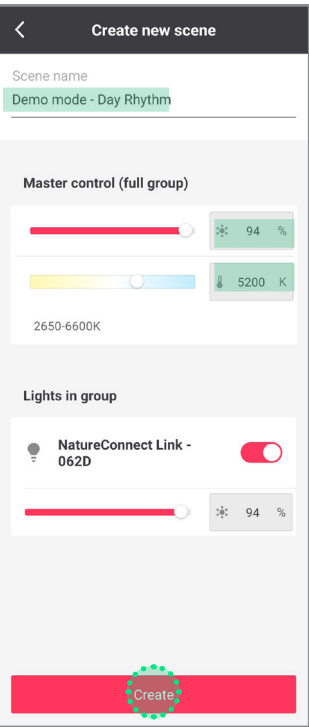
Additional scenes (optional)

DEMO MODE

It is possible to program a scene that runs in cycle a faster mode of the dynamic scenes. Suitable for demo purposes controlled through the commissioning app.

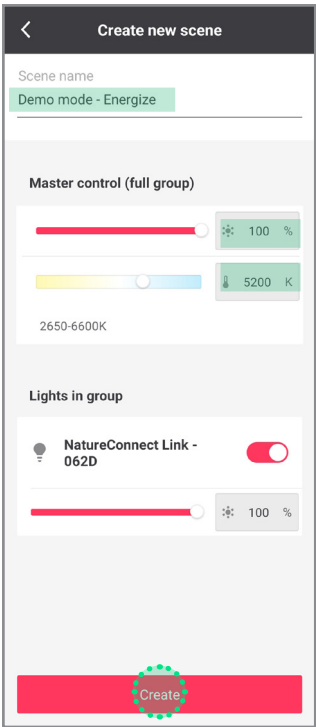


DEMO DAY RHYTHM



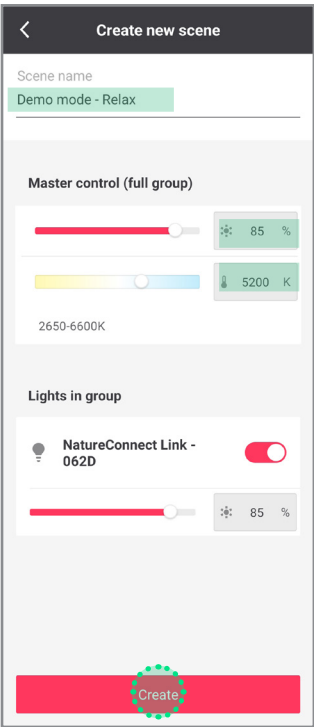
Set brightness to 94%
Set CCT to 5200 K

DEMO ENERGIZE



Set brightness to 100%
Set CCT to 5200 K

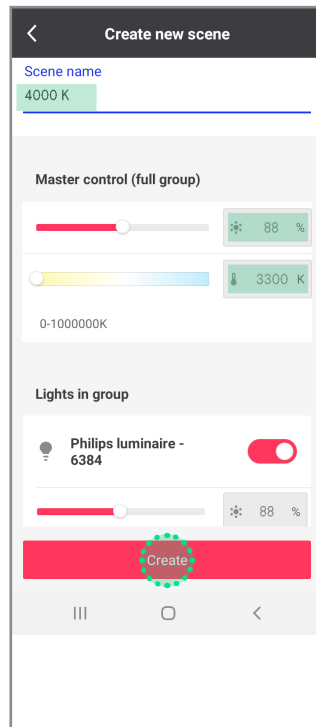
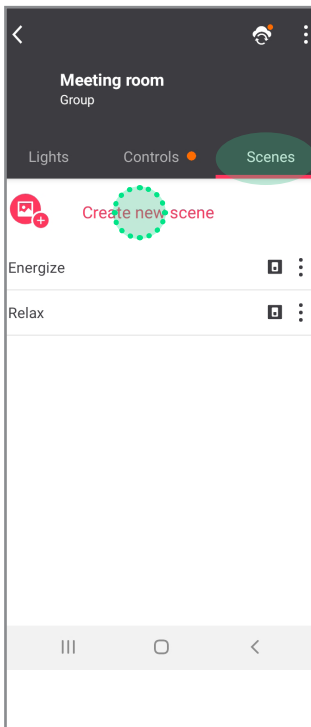
DEMO RELAX



Set brightness to 85%
Set CCT to 5200 K

4000 K

Static scene especially developed for office applications. It keeps a CCT of 4000 K on the desk, during all the day.



Set brightness to 88%
Set CCT to 3300 K



© 2024 Signify Holding. All rights reserved. The information provided herein is subject to change, without notice. Signify does not give any representation or warranty as to the accuracy or completeness of the information included herein and shall not be liable for any action in reliance thereon. The information presented in this document is not intended as any commercial offer and does not form part of any quotation or contract, unless otherwise agreed by Signify.

All trademarks are owned by Signify Holding or their respective owners