

Signify

UID8465/10

Wireless switch,
scene selection



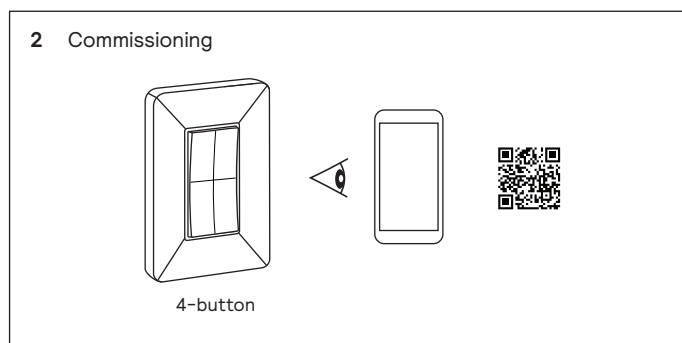
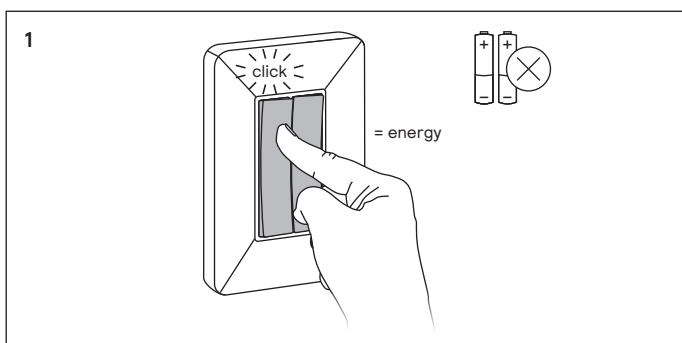
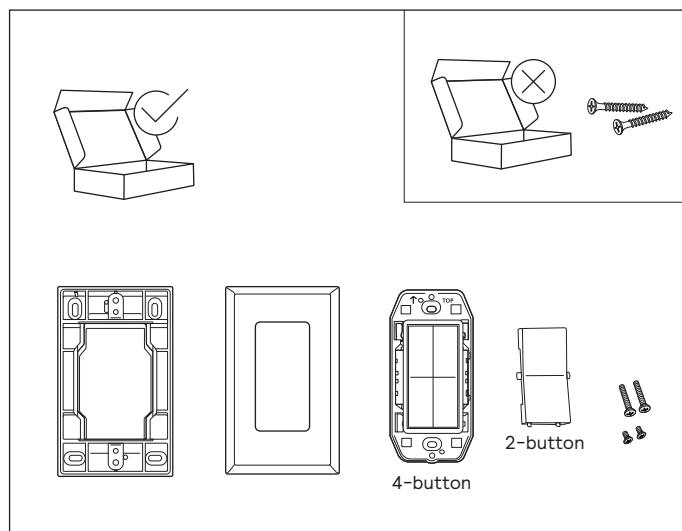
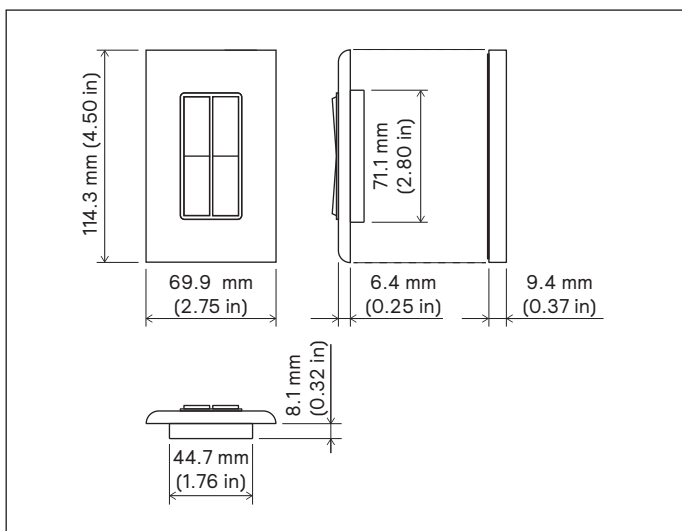
Installation instructions

Instructions d'installation
Instrucciones de instalación

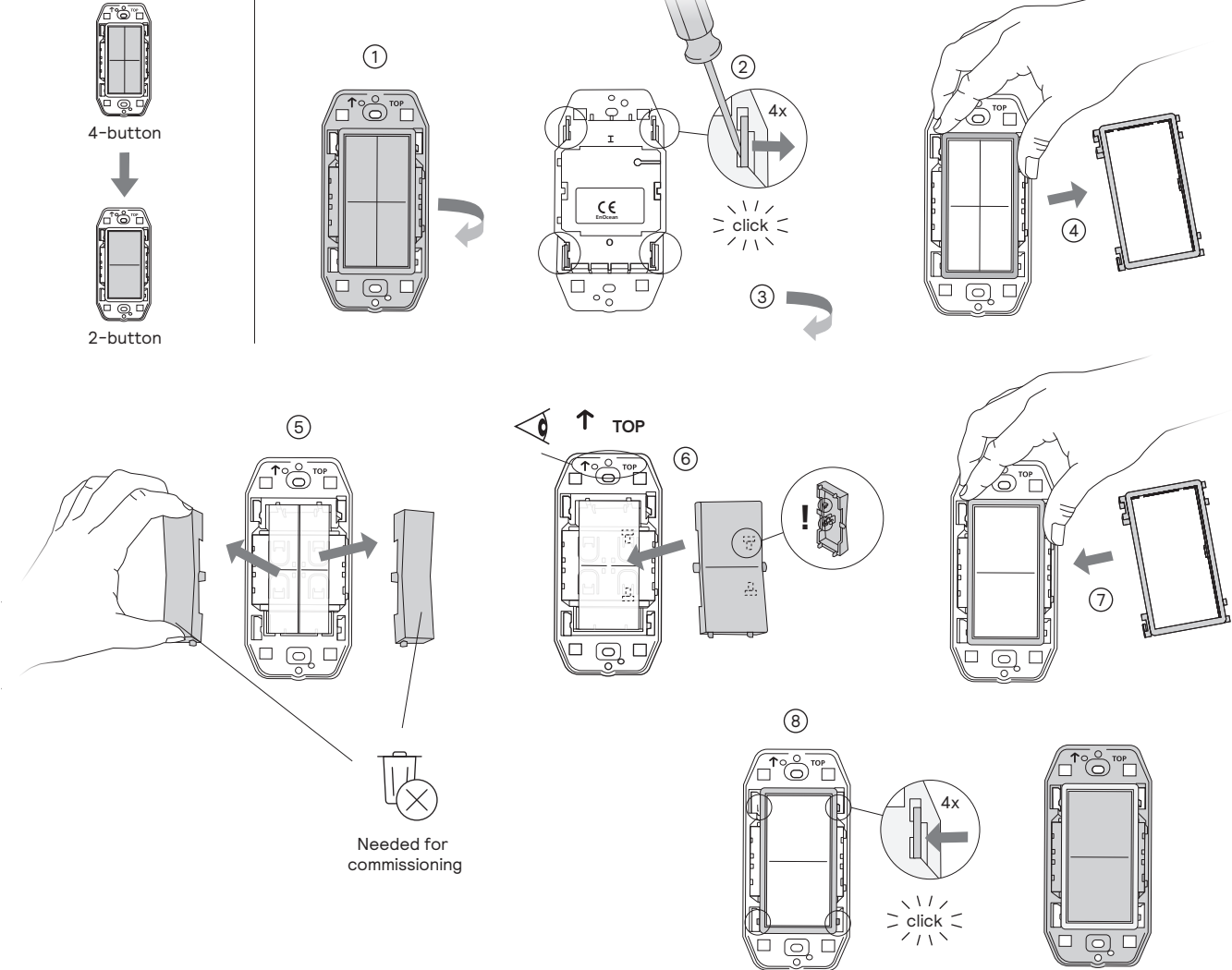
Istruzioni per l'installazione
Installatie-instructies

Installationsanweisungen
インストール手順

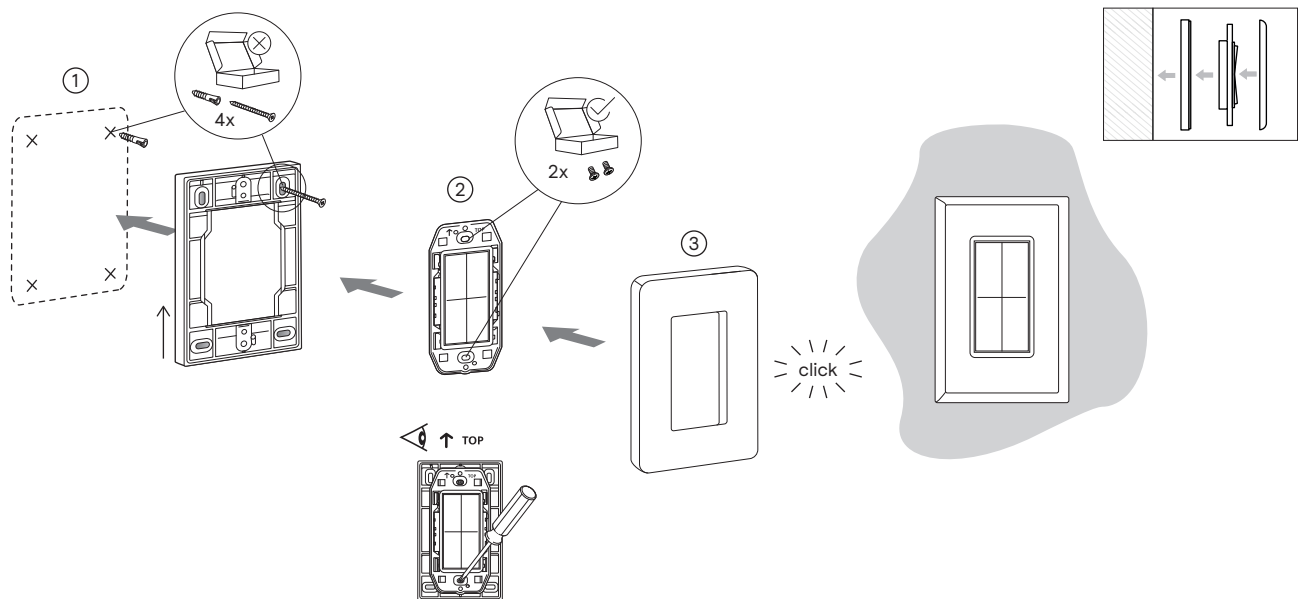
安装指示书
إرشادات التركيب



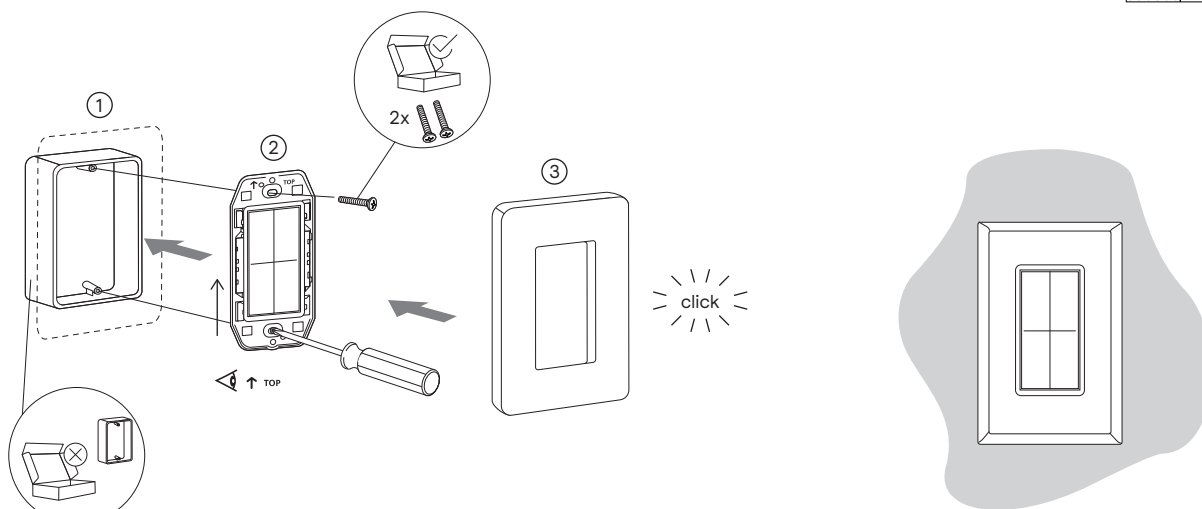
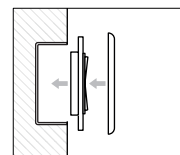
3 Optional



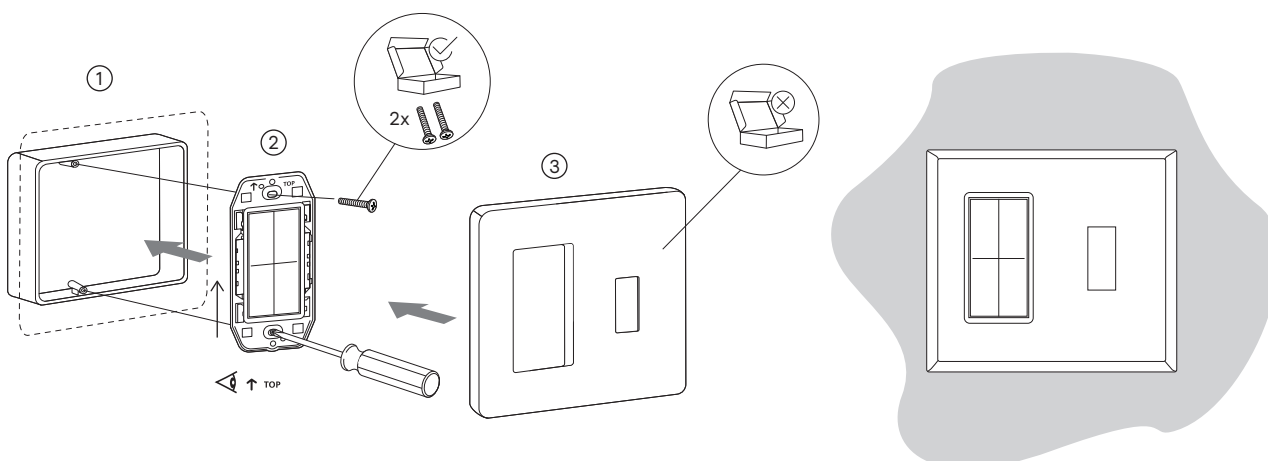
4a Surface mount



4b Recessed mount on junction box



Or



Hereby, Signify declares that the radio equipment type UID8465/10 is in compliance with Directive 2014/53/EU. The full text of the EU declaration of conformity is available at the following Internet address:
www.signify.com/red

Signify

© 2022–2025 Signify Holding. All rights reserved. The information provided herein is subject to change, without notice. Signify does not give any representation or warranty as to the accuracy or completeness of the information included herein and shall not be liable for any action in reliance thereon. The information presented in this document is not intended as any commercial offer and does not form part of any quotation or contract, unless otherwise agreed by Signify. All trademarks are owned by Signify Holding or their respective owners.

UK importer address:
 Signify Commercial UK Limited
 2 Guildford Business Park
 GU2 8XG, UK