

Signify

UID8470/10

Wireless switch, dim



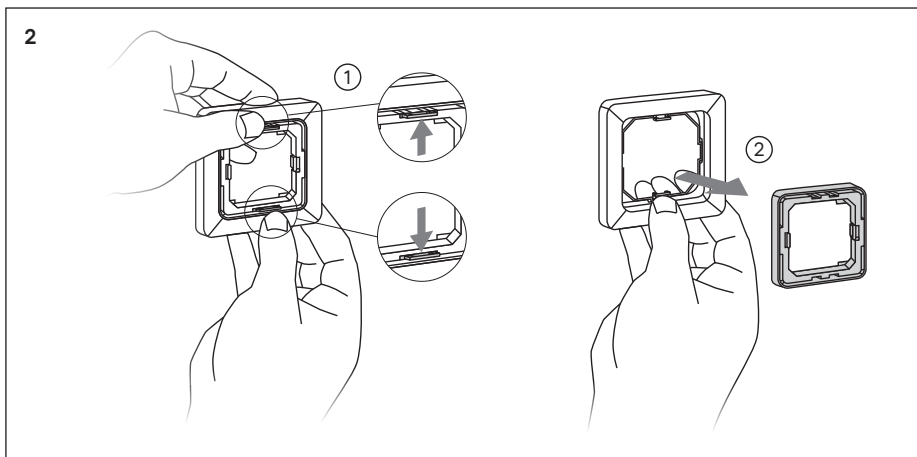
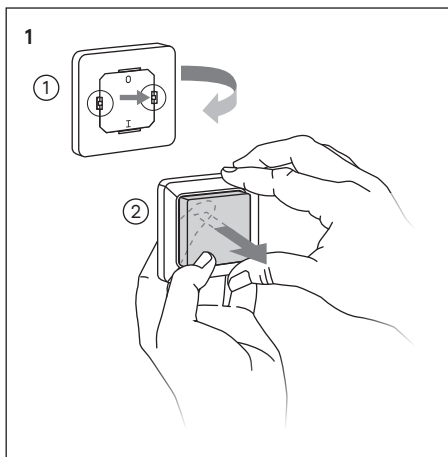
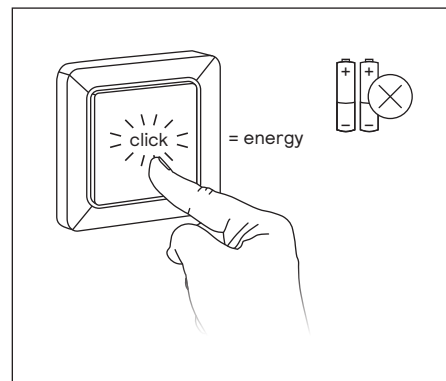
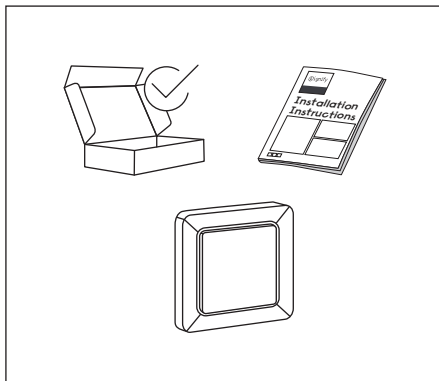
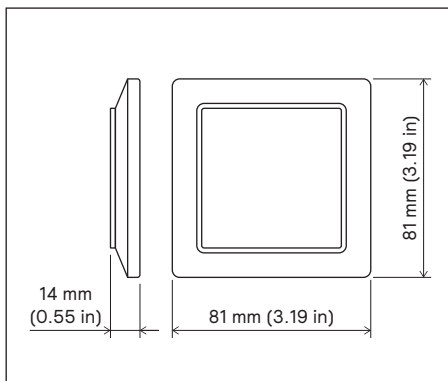
Installation instructions

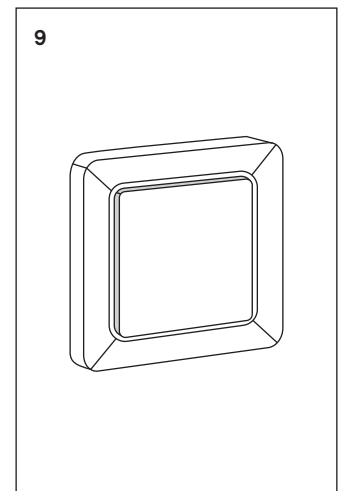
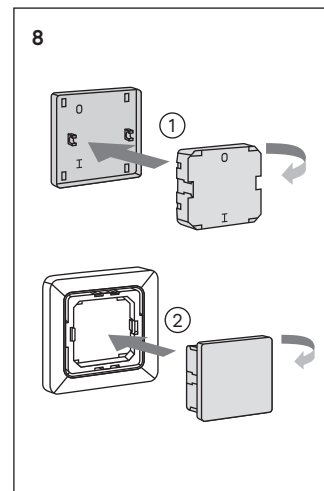
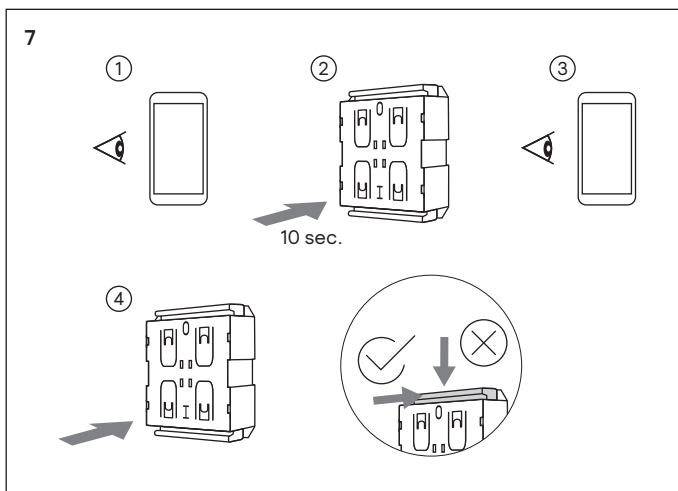
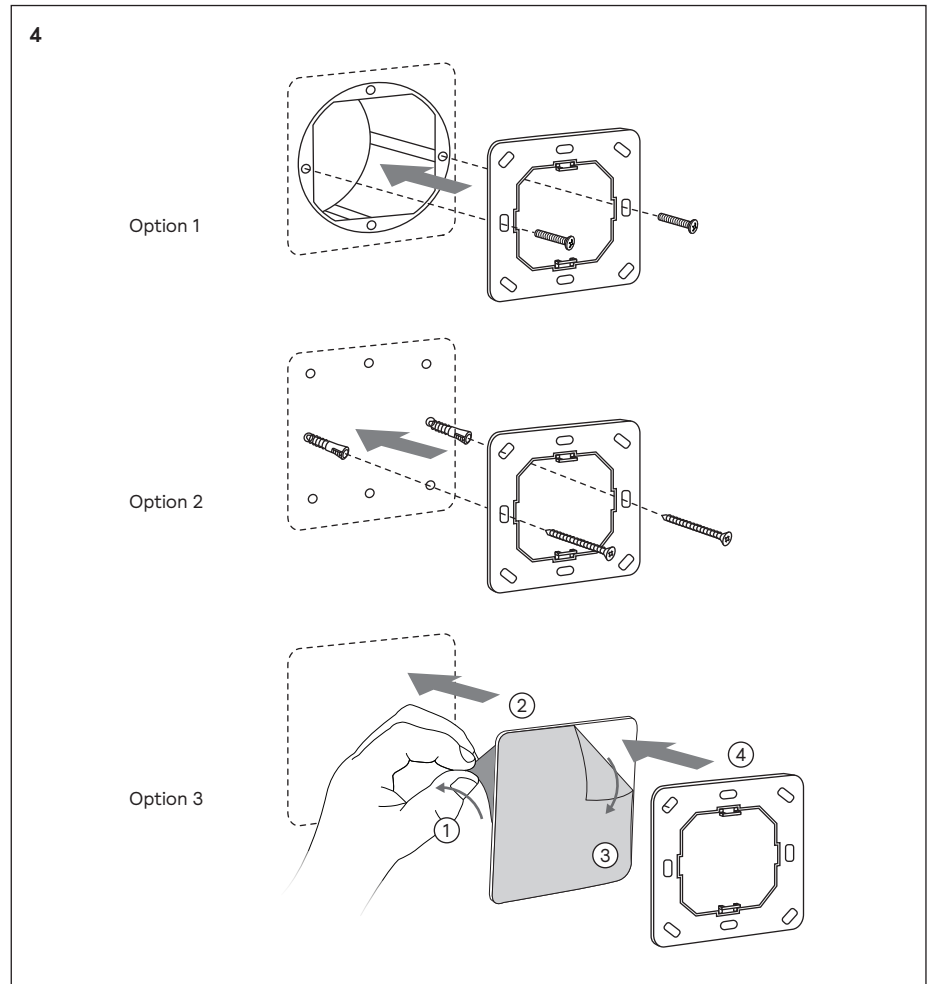
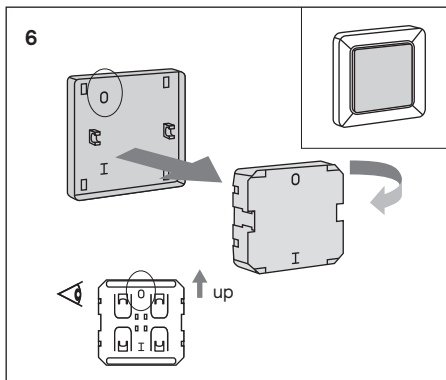
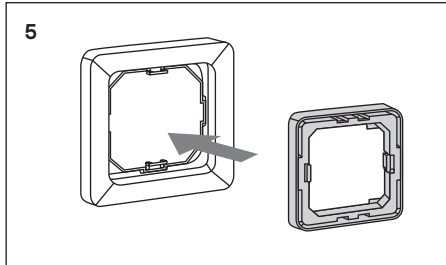
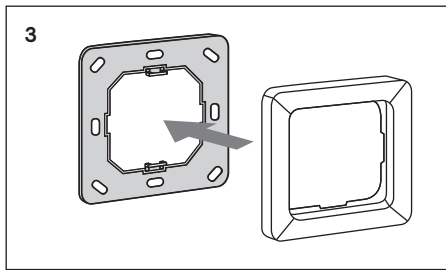
Instructions d'installation
Instrucciones de instalación

Istruzioni per l'installazione
Installatie-instructies

Installationsanweisungen
インストール手順

安裝指示书
بەرفەرئە تاداشرە





Hereby, Signify declares that the radio equipment type UID8470/00 is in compliance with Directive 2014/53/EU. The full text of the EU declaration of conformity is available at the following Internet address: www.signify.com/red

Signify

© 2020–2025 Signify Holding. All rights reserved. The information provided herein is subject to change, without notice. Signify does not give any representation or warranty as to the accuracy or completeness of the information included herein and shall not be liable for any action in reliance thereon. The information presented in this document is not intended as any commercial offer and does not form part of any quotation or contract, unless otherwise agreed by Signify. All trademarks are owned by Signify Holding or their respective owners.

4422 947 77013, 2 June 2025

UK importer address:
Signify Commercial UK Limited
2 Guildford Business Park
GU2 8XG, UK

www.signify.com/products

